



Get superior software quality with embedded test automation

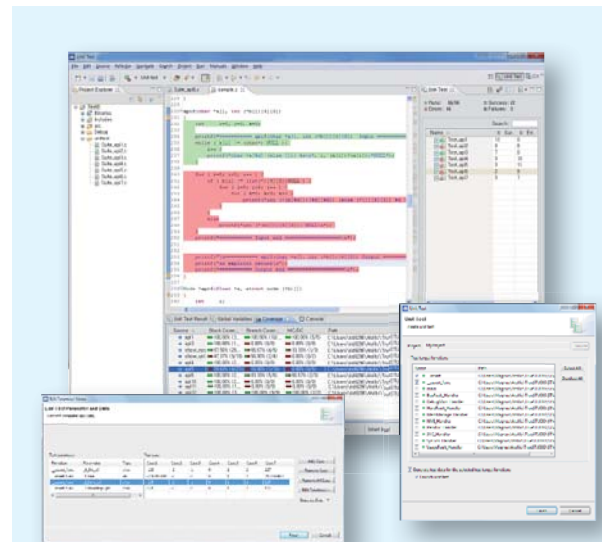
TrueVERIFIER

Atollic TrueVERIFIER™ is a professional tool for advanced test automation that helps you find bugs automatically. By using Atollic TrueVERIFIER™, you can easily improve the quality of your software product!

Atollic TrueVERIFIER™ performs source code analysis and auto-generates unit tests that exercise an extensive set of different execution paths. The tool downloads the test cases and runs them in a target board with code coverage monitoring. Finally, Atollic TrueVERIFIER™ visualizes the test results and the achieved test/code coverage.

Atollic TrueVERIFIER™ provides the following features:

- Analyzes the source code and automatically finds out how a C-function needs to be tested, to drive as many combinations of important execution paths as possible.
- Enables user to add/edit/remove test suites and test cases
- Auto-generates unit test source code in the C-language
- Auto-compile and auto-downloads (JTAG) the unit tests
- Auto-runs the unit tests in the target board with execution flow monitoring
- Users can instrument the test cases for advanced failure detection
- Uploads the test results as well as test and code coverage
- Visualisation of test results and Block-, Branch- and Modified condition/Decision coverage



Example code to be tested

```
int MyFunc( char x )
{
    if( x < 50 )
        return 0;
    else
        return 1;
}
```

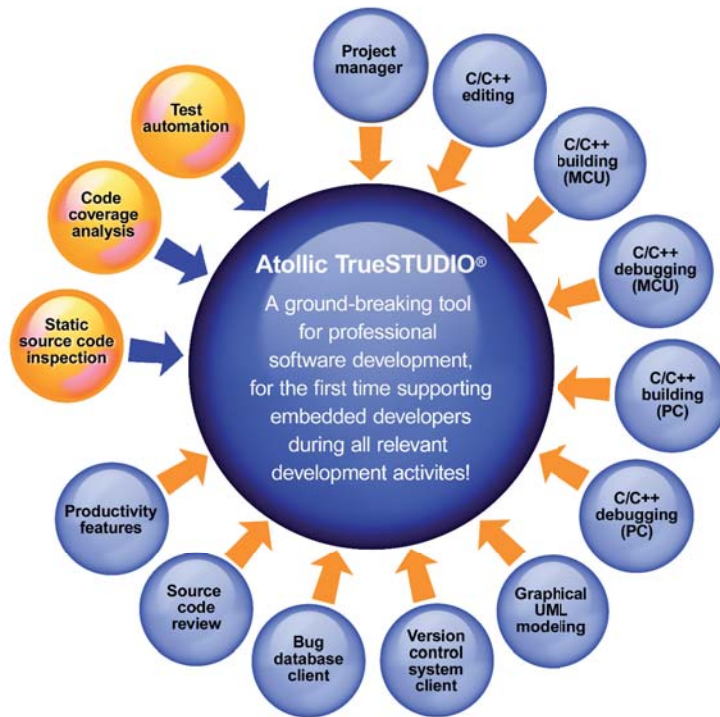
Important parameter values are found by analysing the code

- MyFunc (-128); Test minimum value of datatype
- MyFunc (-2);
- MyFunc (-1);
- MyFunc (0); Test values around 0
- MyFunc (1);
- MyFunc (2);
- MyFunc (49);
- MyFunc (50); Test values around 50
- MyFunc (51);
- MyFunc (127); Test maximum value of datatype

Auto-generated unit tests (function calls)

Summary - Test automation	
What is it?	The means by which a software tool analyse the source code of a program, generates suitable test cases and run them automatically.
Why do it?	With auto-generated test cases, the source code and unit tests are always synchronized, test cases cover a much larger set of potential execution paths, and good testing becomes much easier and faster.
How does it work?	A tool analyze an application, generate test cases, and execute them with execution-path monitoring. Once a test session is completed, test results and test coverage information is presented to the developer or tester.

A complete set of world class tools for development and testing

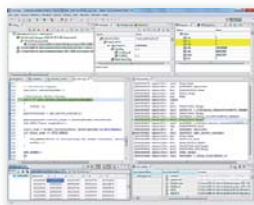


More tools for professional development – from code to market.

The embedded systems development tool for the next decade!

TrueSTUDIO

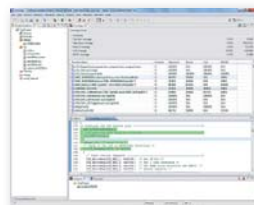
Atollic TrueSTUDIO® is the premier C/C++ development tool for embedded systems development, with its unrivalled feature-set and unprecedented integration. In addition to the state-of-the-art editor, the optimizing C/C++ compiler and multiprocessor-aware debugger, Atollic TrueSTUDIO® also includes features for team collaboration, graphical modeling and design, code review and review meetings, and much more.



Measure test quality with dynamic execution flow analysis!

TrueANALYZER

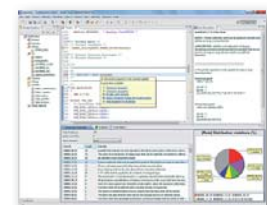
Atollic TrueANALYZER® is a tool for professional code analysis. The product performs dynamic execution flow analysis and provides rigorous code coverage measurements. Atollic TrueANALYZER® support many types of code coverage analysis up to the level of Modified condition/decision coverage (MC/DC-level) as required by RTCA DO-178B (Level A) for flight-control-system software.



Ensure coding standards compliance with professional code inspection!

TrueINSPECTOR

Atollic TrueINSPECTOR® is a tool for professional code analysis. The product performs static source code inspection and generates software metrics. The source code is validated against a database of formal coding standards, and coding constructs that are known to be error-prone are detected automatically. Atollic TrueINSPECTOR® supports the MISRA®-C:2004 coding standard.



MISRA® is a registered trademark of MISRA Ltd, held on behalf of the MISRA Consortium.



sales@atollic.com • www.atollic.com

Science Park Jönköping • Gjuterigatan 7 • SE-553 18 Jönköping • Sweden