

Atollic TrueANALYZER/STM32 provides dynamic code analysis on STM32

JÖNKÖPING, Sweden – April 21, 2010 - Atollic today announced the world-wide release of Atollic TrueANALYZER/STM32, a new advanced tool for professional dynamic code coverage analysis of applications executing on STM32 target boards.

Code coverage analysis is commonly used to study which combinations of all the potential execution paths have been tested (and more importantly, which have not). There are many different types of code coverage analysis, from very simple analysis up to very stringent types. Code coverage analysis is often classified formally. The more advanced types of code coverage analysis (such as C1 and MC/DC) are often used for testing of safety critical software, such as flight control systems.

For example, RTCA DO-178B (a standard for development of flight-safety-critical software) requires MC/DC testing of software on "Level-A criticality", the most critical part of airborne software, where a software error can lead to a catastrophic situation with loss of aircraft or human lives.

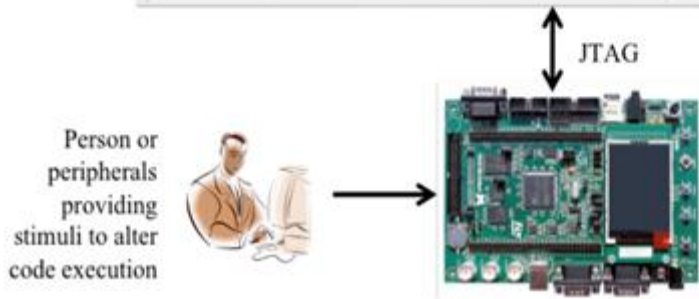
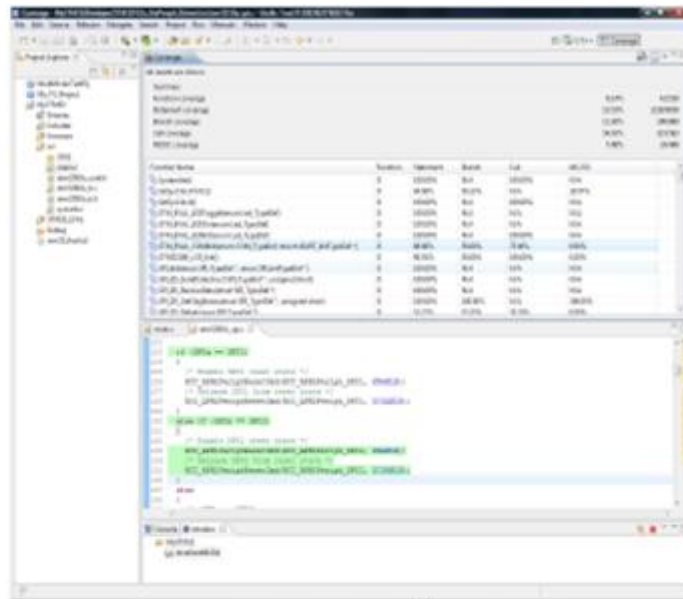
Atollic TrueANALYZER/STM32 supports the following types of code coverage analysis:

- Function coverage
- Function call coverage
- Statement coverage (C0-level)
- Decision/branch coverage (C1-level)
- Modified condition/decision coverage (MC/DC-level)

Code coverage analysis on C1 and MC/DC-levels are nearly impossible to perform without sufficient tool support, for anything but very short and trivial code sections. Atollic TrueANALYZER/STM32 automate this complex task by instrumenting the application, running it in the target system, and presenting the code coverage analysis results right in the C/C++ environment on the PC.

"Using Atollic TrueANALYZER, any STM32 developer can now use advanced testing techniques from the aircraft industry to improve their software quality", says Magnus Unemyr, Vice President of Sales & Marketing at Atollic, and adds that "using this tool, a very complex dynamic analysis of the execution flow becomes fast and incredibly easy to perform."

The illustration below shows a typical scenario where Atollic TrueANALYZER first instruments the application and download it to the target board using a JTAG probe. A user or other systems interact with the application executing on the board, thus affecting the execution flow. Finally, analysis results are uploaded to Atollic TrueANALYZER for visualization and report generation.



Atollic TrueANALYZER/STM32 integrates fully in Atollic TrueSTUDIO/STM32, the premier C/C++ development tool for STM32 devices from STMicroelectronics.

More information is available from the Atollic website (www.atollic.com). Video tutorials covering the usage of the product are available at the Atollic website as well.

Contact Atollic for high-resolution images suitable for printing.

About Atollic

Atollic provides professional and highly integrated software development tools to the global embedded systems market. Atollic cooperate with many of the world's largest semiconductor manufacturers and have many other partners in related fields. The company's products are distributed via an extensive international distributor network in over 30 countries. Atollic also offers expert software development services, primarily in the Automotive, Aerospace, Defense, Industrial and Consumer markets. For more information on Atollic, please visit www.atollic.com.

For more information, contact:

Atollic AB
Science Park
Gjuterigatan 9
SE-553 18 Jönköping
Sweden

Tel +46 36 196050

Primary point of contact for media:

Magnus Unemyr
Vice President of Sales & marketing
magnus.unemyr@atollic.com